



## THE SIGNIFICANCE OF GASTRONOMIC STREETS IN THE DEVELOPMENT OF REGIONAL TOURISM (A CASE STUDY OF NAMANGAN CITY)

<https://doi.org/10.5281/zenodo.19534358>

Nozima Asadullayeva

**Abstract:** *This study examines the role and significance of gastronomic streets in the development of regional tourism within modern urban planning practices, using Namangan city as a case study. In recent years, the rapid growth of domestic and pilgrimage tourism in Uzbekistan has necessitated the creation of new conceptual public spaces in historical urban centers. The primary objective of the research is to develop a specialized gastronomic street model that enhances the touristic attractiveness of Namangan city. The research methodology employs a comprehensive approach, including comparative analysis, the graph-analytical method, a case study (specifically the "National Culinary and Handicrafts Center"), and architectural design modeling.*

*As a result of the study, functional-planning and compositional deficiencies of the target area were identified, and architectural design principles aimed at addressing them were developed. Specifically, a system focusing on pedestrian permeability, visual integration, and "liminal spaces" (flexible micro-spaces) within the street environment is proposed. The scientific novelty lies in the first-time architectural and ergonomic justification of a linear public space in a "street" format as a tool for enhancing Namangan's tourism infrastructure. The practical significance of the research involves the development of strategic recommendations for local government authorities and private investors to shape the city's touristic landscape.*

**Keywords:** *gastronomic street, regional tourism, urban space, architectural environment, functional planning, pedestrian zone, Namangan city, design-code.*

### 1. INTRODUCTION

Relevance. In an era of global urban homogenization, preserving local identity and transforming it into a viable tourism product has become a critical challenge. Strategic programs for tourism development in the Republic of Uzbekistan, particularly the "Concept for the Development of the Tourism Sector for 2019-2025," emphasize unlocking

regional potential and creating new tourism clusters. Within this framework, gastronomic tourism holds a unique position. Gastronomy is not merely a dining process but a vital element representing a nation's cultural code, history, and traditions.

While Namangan has emerged as a major industrial and cultural hub, its tourism infrastructure specifically specialized public



spaces showcasing its gastronomic potential remains underdeveloped. The opening of the "National Culinary and Handicrafts Center" in 2024 [1] marked a significant milestone. However, as an isolated facility, the center lacks full integration into the city's general tourist routes and exhibits poor connectivity with its surrounding environment. Consequently, developing a "gastronomic street" concept encompassing or adjacent to this center is one of the most effective mechanisms to enhance the area's tourist attractiveness.

**Literature Review.** The impact of urban public spaces on tourism has been extensively studied by international scholars. The "Space Syntax" theory, pioneered by Bill Hillier, elucidates how the configuration of the urban grid influences pedestrian flow and social dynamics [3]. The role of gastronomic spaces within the urban fabric has been examined in European cities (e.g., Munich and The Hague), where they are integrated with modern architecture and interior design [2][7]. Within the CIS, the ergonomic space and its linguistic-communicative features have been analyzed in cities like Kazan and Yoshkar-Ola [4]. In Uzbek architectural science, however, the concept of gastronomic streets lacks a robust theoretical foundation and is primarily discussed at a journalistic level.

**Scientific Hypothesis.** The establishment of a linear, pedestrian-oriented gastronomic street in a high-potential area of central Namangan will increase the area's

touristic and recreational load, positively impacting the city's economic and social activity.

**Research Objective.** The objective is to develop a gastronomic street concept for Namangan that harmonizes with its historical and cultural context while utilizing modern architectural and design solutions to foster regional tourism. To achieve this, the following tasks were defined:

1. Conduct an architectural-spatial and functional analysis of the existing National Culinary Center and its adjacent areas in Namangan.
2. Identify effective models for organizing gastronomic streets through a comparative study of international and local practices.
3. Justify the functional-ergonomic

**Object and Subject of Research.** The object is the public spaces within Namangan's tourism infrastructure (specifically the area surrounding the "National Culinary and Handicrafts Center"). The subject includes the architectural-design principles, functional zoning, and ergonomic solutions for forming gastronomic streets.

### Scientific Novelty:

- The architectural-spatial model of a gastronomic street concept is developed for the first time specifically for Namangan.
- Parametric indicators for enhancing pedestrian permeability in urban tourist zones are identified using elements of



Space Syntax theory.

- A proposal for street furniture and a design-code based on a synthesis of national traditions and modern design (modernist elements) is provided.

**Practical Significance.** The research findings serve as practical recommendations for the Namangan city municipality, the State Committee for Tourism Development, and local investors. The developed model can also serve as a benchmark for similar projects in other regions, such as Andijan and Fergana.

## 2. METHODS

- The research adopts a comprehensive approach, incorporating several methodologies for analyzing the urban architectural environment.

**2.1. Comparative Analysis.** This method was utilized to study the experience of organizing gastronomic streets and markets in Uzbekistan (Tashkent, Bukhara, Khiva) and foreign countries (Turkey, Italy, the Netherlands). Specifically, a comparative analysis was conducted on the principles of restoring industrial heritage into modern gastronomic hubs, as seen in the "Foodhallen" project in The Hague [7], and the integration of streets and courtyards within the "Franz Marc Quartier" complex in Munich [2].

### 2.2. Graph-Analytical Method.

Graph-analytical modeling was employed to determine the location of high-potential areas within the urban structure, the intensity of transport and pedestrian flows,

and the level of visual connectivity. Based on this method, an initial analysis of the area was conducted following the principles of "Space Syntax" theory [3].

**2.3. Case Study.** The core of the research is based on an in-depth study of the newly opened "National Culinary and Handicrafts Center" in Namangan [1] and the adjacent section of Uychi Street. During the case study, the following aspects were examined:

- Functional zoning of the territory;
- Pedestrian and transport movement schemes;
- Architectural style and physical condition of existing buildings;
- Silhouette and compositional characteristics of the area. The findings were synthesized using a SWOT analysis (strengths, weaknesses, opportunities, and threats).

**2.4. Design Modeling.** Based on the identified theoretical principles and analytical data, a 3D model of the gastronomic street was developed. The modeling process utilized Autodesk Revit and 3ds Max software. This method allowed for the verification of the harmony between the proposed architectural forms, landscape design, and small architectural forms (SAF) with the surrounding environment.

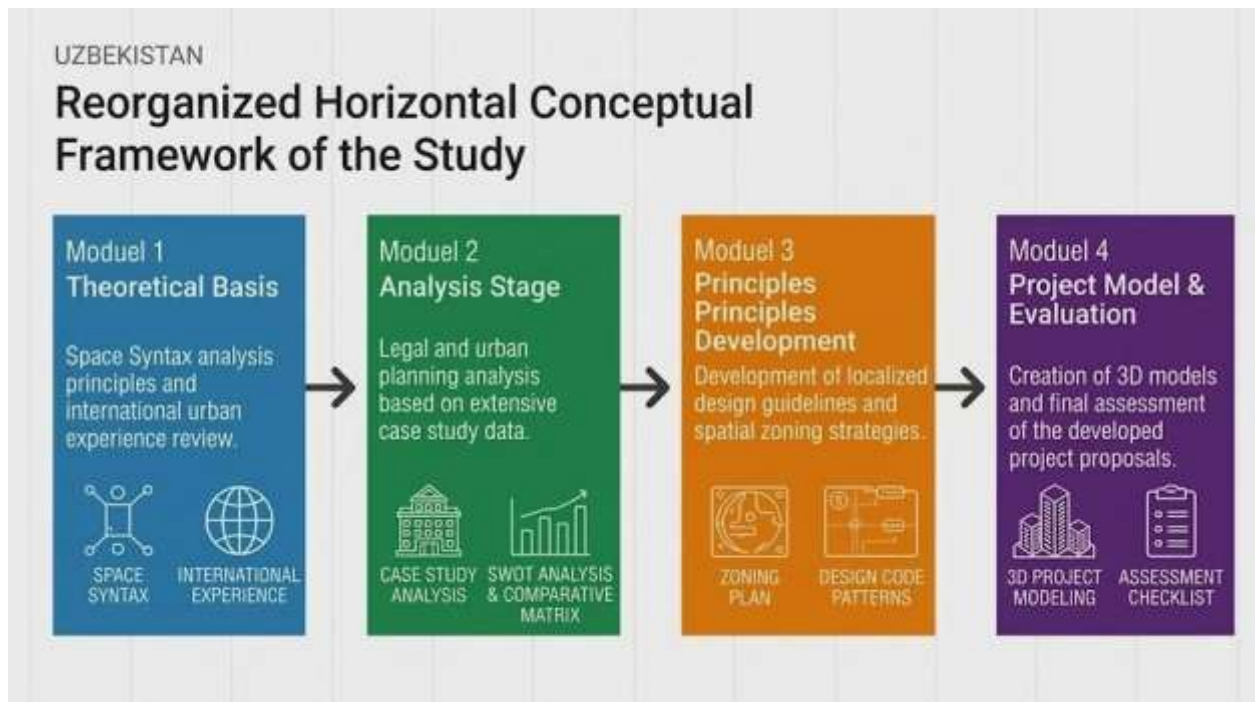


Figure-1 Reorganized Horizontal Conceptual Framework of the Study. Author's development based on research materials from Tashkent State University of Uzbek Language and Literature named after Alisher Navoi.

### 3. RESULTS

The analytical research conducted has identified several architectural-spatial patterns and problematic aspects of organizing a gastronomic street in Namangan.

**3.1. Analysis of the Existing Situation (Case Study Results).** The "National Culinary and Handicrafts Center" [1] is constructed in a modern national style, incorporating authentic artifacts from the 16th to 19th centuries. The center has a capacity of 1,000 people and integrates a house of arts with a handicraft center. However, the integration of the site with the external urban environment exhibits the following deficiencies:

- **Transport and Pedestrian Conflict:** There is no dedicated pedestrian-only zone on the primary routes leading to the center. Pedestrian flows intersect directly with vehicular traffic, creating significant ergonomic discomfort and safety risks.
- **Functional Mono-zonality:** The area surrounding the center functions almost exclusively as a transit corridor. There is a lack of diverse micro-spaces (liminal spaces) designed for outdoor dining, leisure, or open-air exhibitions.
- **Lack of Contextual Identity:** While the center building itself possesses a high degree of national color and identity, the adjacent street furniture (lighting fixtures, benches, retail stalls) is generic and lacks a



cohesive character.

**3.2. Analysis of Functional-Planning Parameters.** The analysis of the area's pedestrian permeability and visual integration allowed for the identification of the indicators presented in the following comparative table. The data presented in the comparative analysis (see **Table 1**) indicates that the width of existing pedestrian walkways is significantly below standard

regulatory requirements. Furthermore, the lack of physical separation between pedestrian paths and the vehicular roadway considerably reduces safety levels. The study also reveals that the density and diversity of street furniture (lighting, seating, and information stands) do not meet the functional demands of a high-intensity tourist zone.



Table 1-Comparative Analysis of the Existing and Proposed Functional-Planning. Author's development based on research materials from the Tashkent State University of Uzbek Language and Literature named after Alisher Navoi (2024).

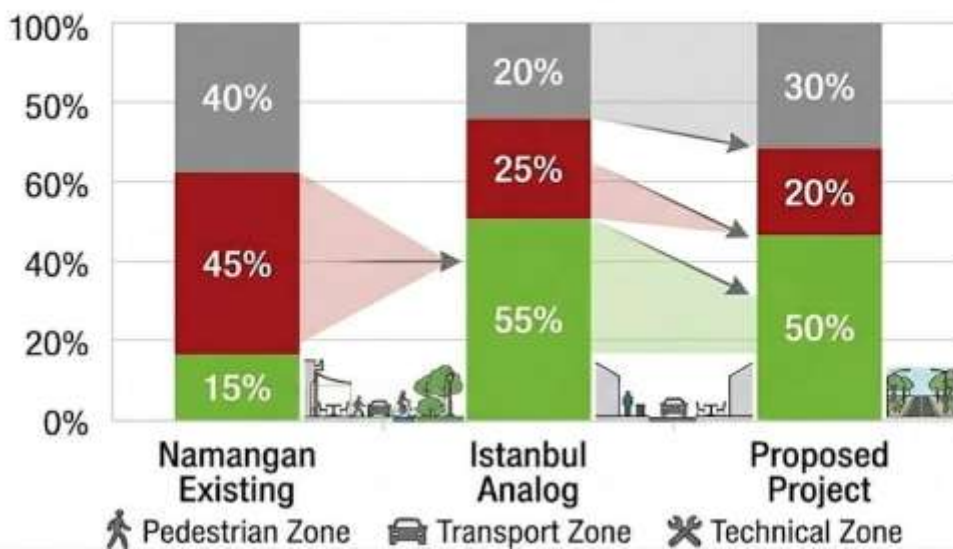
### 3.3. Comparative Diagram Analysis

The following diagram illustrates a comparative analysis of functional zone proportions between the existing situation in Namangan and analogous international cases (e.g., Istiklal Street



in Istanbul). The analysis reveals that in its current state, the pedestrian zone in Namangan accounts for a very low share of the total area (**15%**), while the transport zone (**45%**) and technical/service zones (**40%**) predominate. In the proposed project, there is a strategic opportunity to increase the pedestrian zone's share to **50%**, while simultaneously reducing the transport zone to **20%**.

Comparatiivo Comparative Diagram of Zones





*Diagram 1-Comparativo Comparative Diagram of Zones. Author's development based on research materials from the Tashkent State University of Uzbek Language and Literature named after Alisher Navoi (2024).*

### 3.4. Key Parameters of the Proposed Design Project

To address the identified deficiencies and foster regional tourism development, the following architectural and design solutions were developed:

1. **Street Profile Transformation:** The existing vehicular roadway is proposed to be narrowed and converted into a one-way system, with the reclaimed space dedicated to pedestrian zones and bicycle lanes. This alignment strictly adheres to the "Complete Street" concept [6].

2. **Differentiation of Functional Zones:** The street layout is strategically divided into several specialized zones to ensure ergonomic efficiency:

- **Frontage Zone (Facade Zone):** Dedicated to the outdoor terraces of cafes and restaurants (4–5 m).
- **Transit Zone:** The primary corridor for high-intensity pedestrian movement (6–7 m).
- **Median Zone (Intermediate):** Designated for seating (benches), bicycle parking, and micro-landscaping elements (2–3 m).
- **Service Zone:** Allocated for temporary retail stalls, information stands, and interactive kiosks (2–3 m).

3. **Design-Code and Small Architectural Forms (SAF):** To establish a unique visual identity, a unified design-code titled "Navoi Ghazal" was developed. This concept synthesizes traditional wood-carving patterns with modern minimalism. All lighting fixtures, benches, and retail modules are designed based on this code. For



interior and exterior finishes, the use of natural materials (wood, stone) and exposed metal structures—prevalent in contemporary international food halls—is recommended [5][7].

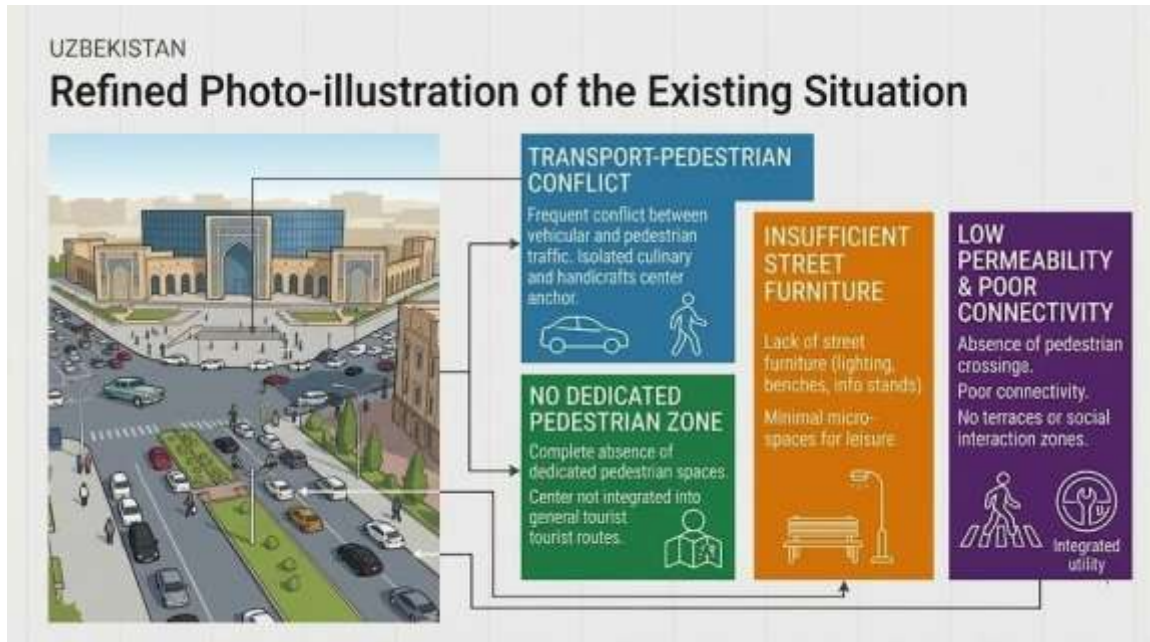


Figure 2- Refined Photo-illustration of the Existing Situation. Author’s development based on research materials from the Tashkent State University of Uzbek Language and Literature named after Alisher Navoi (2024).



*Figure 3- Project Visualisation of the Proposed Gastronomic Street Author's development based on research materials from the Tashkent State University of Uzbek Language and Literature named after Alisher Navoi (2024).*

#### 4. DISCUSSION

The results demonstrate that establishing a gastronomic street in Namangan is not merely a tool for creating a tourist attraction, but a strategic instrument for the

qualitative transformation of the urban environment. This conclusion empirically supports Bill Hillier's theory that urban spatial structure dictates pedestrian movement and social life [3]. By implementing the proposed "street profile transformation," pedestrian permeability can be enhanced, thereby significantly increasing the "integration value" of the area within the Space Syntax framework.

The functional zoning scheme developed during the study (comprising frontage, transit, median, and service zones) aligns with modern international urban planning standards, such as the "Standard for the Formation of the City Appearance" [6] applied in major metropolises like Moscow. This approach allows for the effective differentiation of various traffic participants—pedestrians, cyclists, and café visitors—thus minimizing potential conflict points and safety hazards.

In comparison with international practices, projects such as "Foodhallen" in The Hague [7] and the "Franz Marc Quartier" in Munich [2] achieved success by repurposing industrial and office



buildings into gastronomic hubs. However, the Namangan case presents a unique challenge: developing the open public spaces surrounding a newly constructed center. In this regard, the proposed project transitions from a traditional "isolated center" typology to a "linear street" structure, which facilitates broader urban engagement and social integration.

Nevertheless, the study acknowledges several limitations. First, the research is confined to a single case study (Namangan), which may limit the direct applicability of the results to all regional cities. Second, issues of economic efficiency and investment attractiveness were not analyzed in depth within this scope, necessitating a dedicated economic impact assessment in the future. Third, the public perception and social acceptance of the proposed design-code among the local population should be further clarified through extensive sociological surveys.

## 5. CONCLUSION

The research conducted using Namangan city as a case study has revealed the architectural and spatial potential of gastronomic streets in developing regional tourism. Based on the findings, the following conclusions were drawn:

1. **Current Environment Limitations:** The existing architectural environment of the "National Culinary and Handicrafts Center" and its adjacent areas in Namangan cannot fully realize their tourism potential. The primary

issues identified in the area include the conflict between transport and pedestrian flows, a lack of diverse functional zones, and the absence of a unified design-code.

2. **Proposed Model Efficiency:** An effective model for organizing a gastronomic street is based on the "Complete Street" concept, achieved by reducing the vehicular transport zone and expanding the pedestrian zone. Precise differentiation of functional zones (frontage, transit, median, and service) ensures ergonomic comfort and spatial efficiency.

3. **Architectural Identity:** The development of a modern design-code ("Navoi Ghazal"), rooted in national traditions, provides the area with a unique and recognizable identity while fostering architectural continuity.

### Practical Recommendations:

- **For the Namangan City Municipality:** It is recommended to develop design and estimate documentation to transform the section of Uychi Street adjacent to the "National Culinary and Handicrafts Center" into a fully pedestrian-oriented zone.

- **For Investors and Restaurateurs:** It is advisable to develop incentive programs for adapting the ground floors of buildings along the street into public catering facilities and artisan workshops.

- **For Urban Planning:** The results of this research can be applied to implement similar projects in other high-potential areas of the city, such as



the historical "Old City" (Eski Shahar) district.

Future Research Directions:

Future studies should focus on assessing the economic efficiency (profitability, investment volume) and social impact (public satisfaction levels,

job creation) of gastronomic streets. Furthermore, testing the proposed model using Virtual Reality (VR) technologies and conducting extensive sociological surveys will contribute to the successful implementation and social acceptance of such urban projects.

## REFERENCES:

1. Ichki Turizm. (2024). *National gastronomic tourism center opened in Namangan*. <https://www.ichkiturizm.uz/ru/event/v-namangane-otkrylsya-nacionalnyy-centr-gastronomicheskogo-turizma>
2. Starostina, A. (2025). *With an artistic and gastronomic inclination: Franz Marc Quartier*. Arxi.ru. <https://archi.ru/print/news/101420>
3. Sokolova, N. S. (2016). Theoretical aspects of the urban spatial structure. *Urban Construction and Architecture*, 1(2), 114–115. <https://doi.org/10.17673/Vestnik.2016.02.21>
4. Ivanova, I. G., & Khabibullina, F. Y. (2025). Linguistic features of the ergonomic space of the central streets of Yoshkar-Ola and Kazan. *Polylinguality and Transcultural Practices*, 22(1), 49–66. <https://doi.org/10.22363/2312-8011-2025-22-1-49-66>
5. Gorelova, D. (2020). *Striped solution: Interiors of the Bagrationovsky shopping center*. Arxi.ru. <https://archi.ru/russia/86172/polosatoe-reshenie>
6. Garant.ru. (2023). *Chapter 34: Algorithm for forming the functional- planning structure of roads, streets, and driveways (Standard for the formation of the city appearance)*. <https://base.garant.ru/72241304/>
7. myDecor. (2019). *Conceptual food court in The Hague*. <https://mydecor.ru/interior/hotels-restaurants/konceptualnyi-fud-kort-v-gaage-id6849869/>
8. Bastrakova, T. V. (2023). Urban planning principles for the formation of city squares and streets. *StudNet*, 6(1). <https://cyberleninka.ru/article/n/gradostroitelnye-printsiy-formirovaniya-gorodskih-ploschadey-i-ulits>
9. Tabatadze, L. (2025). The power of the environment. *EdExpert*, 2.
10. Ivanova-Ilicheva, A. M. (2021). Principles of modernism in the architecture of shopping complexes of the 1960s–1980s in the cities of Southern Russia. *Bulletin of BSTU*, 58–67. <https://doi.org/10.34031/2071-7318-2021-6-10-58-67>